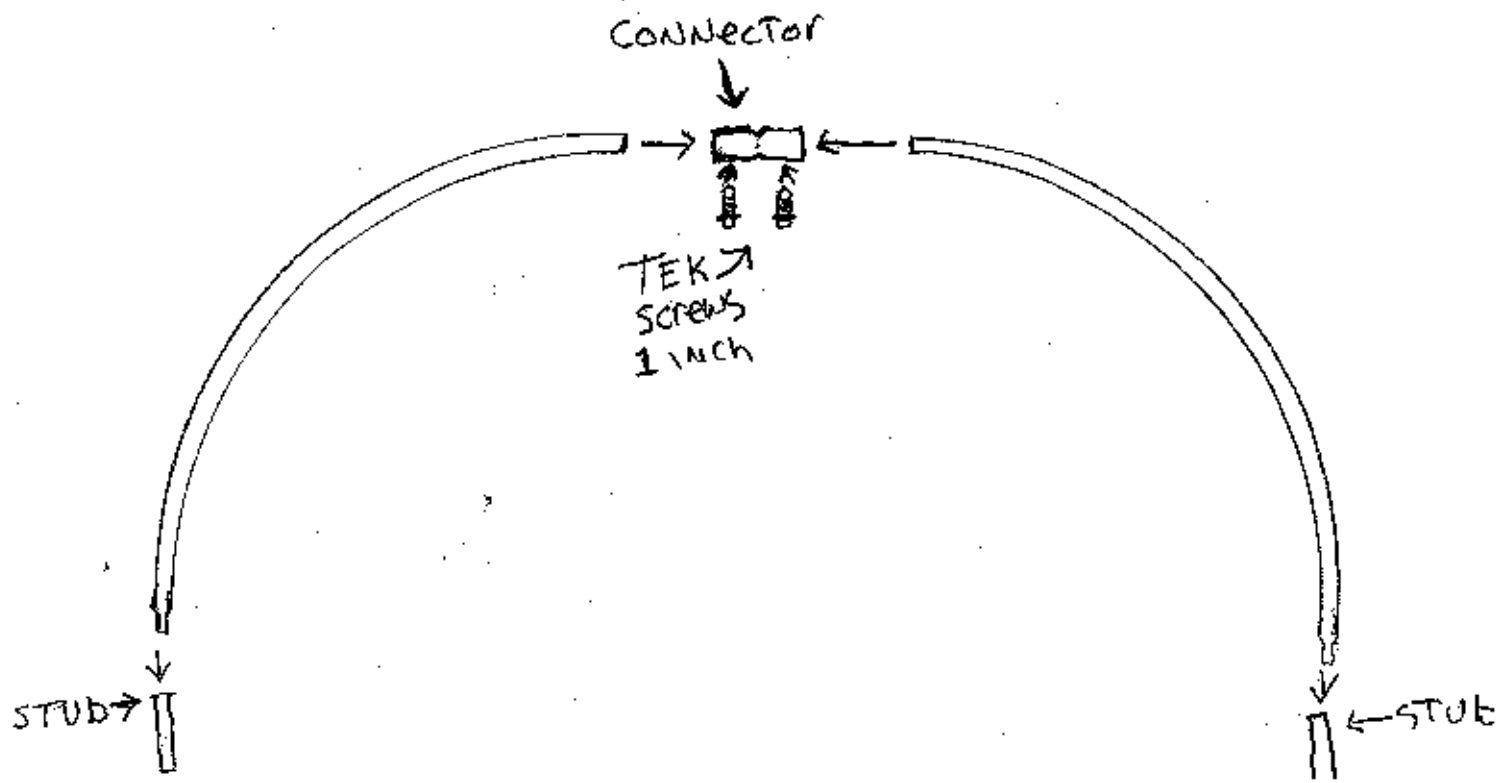


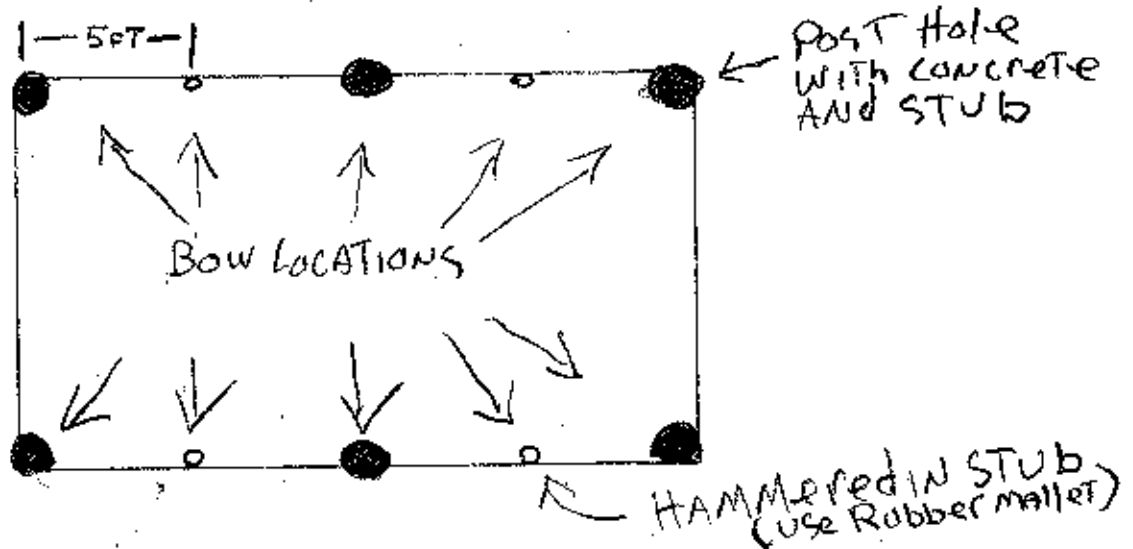
Bow Kit INSTRUCTIONS

- MATERIALS
- 1 INCH TEK SCREWS
 - 1 1/2 INCH TEK SCREWS
 - 1/2 INCH EMT CONDUIT
 - 2x4 LUMBER
 - 1x2 LUMBER
 - 3 INCH DECK SCREWS
 - 1/8 INCH DECK SCREWS
-

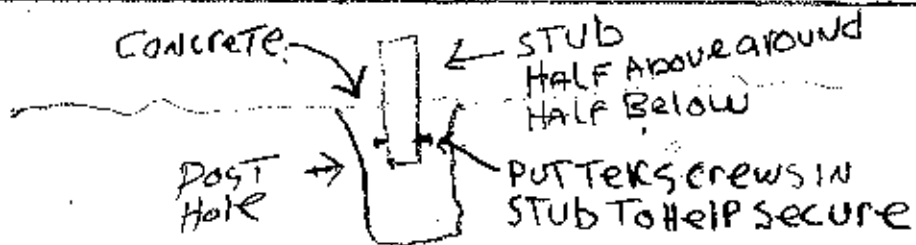


STUB LAYOUT

- PICK SEMI LEVEL AREA (PERFECTLY LEVEL AREAS DO NOT DRAIN WELL)
 - DIG POST HOLES AT 4 CORNERS MAKING SURE THEY ARE SQUARE.
 - USE CONCRETE TO SECURE STUBS IN POST HOLES
 - DIG POST HOLES AT MIDDLE POINT AND USE CONCRETE TO SECURE STUBS IN THESE HOLES. DEPENDING ON LENGTH, YOU MAY WANT TO CONCRETE IN STUBS PERIODICALLY.
- OTHERWISE HAMMER REMAINING STUBS INTO GROUND.

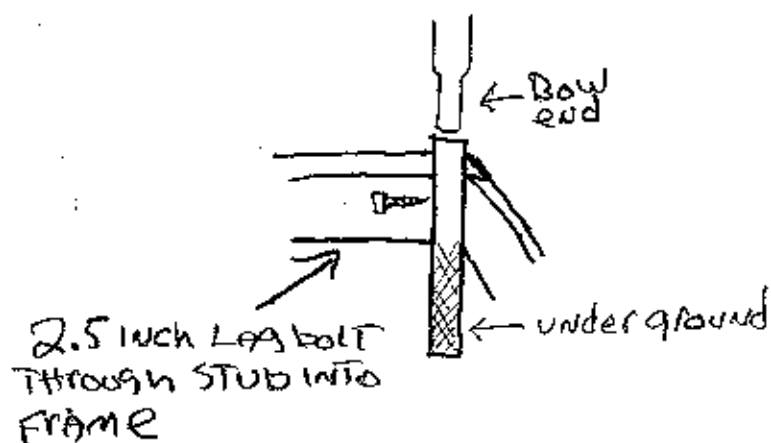
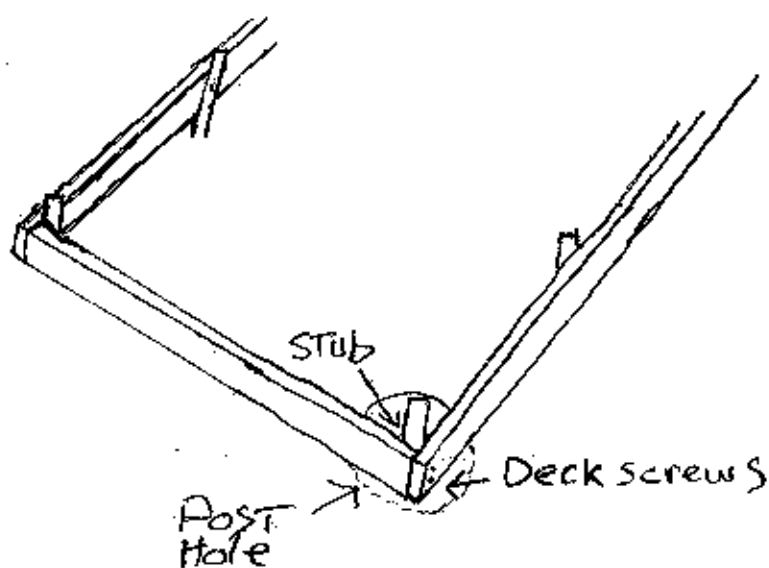


NOTE: YOU CAN USE WOOD FRAME SHOWN ON NEXT PAGE TO HOLD STUBS WHILE CONCRETE CURES.



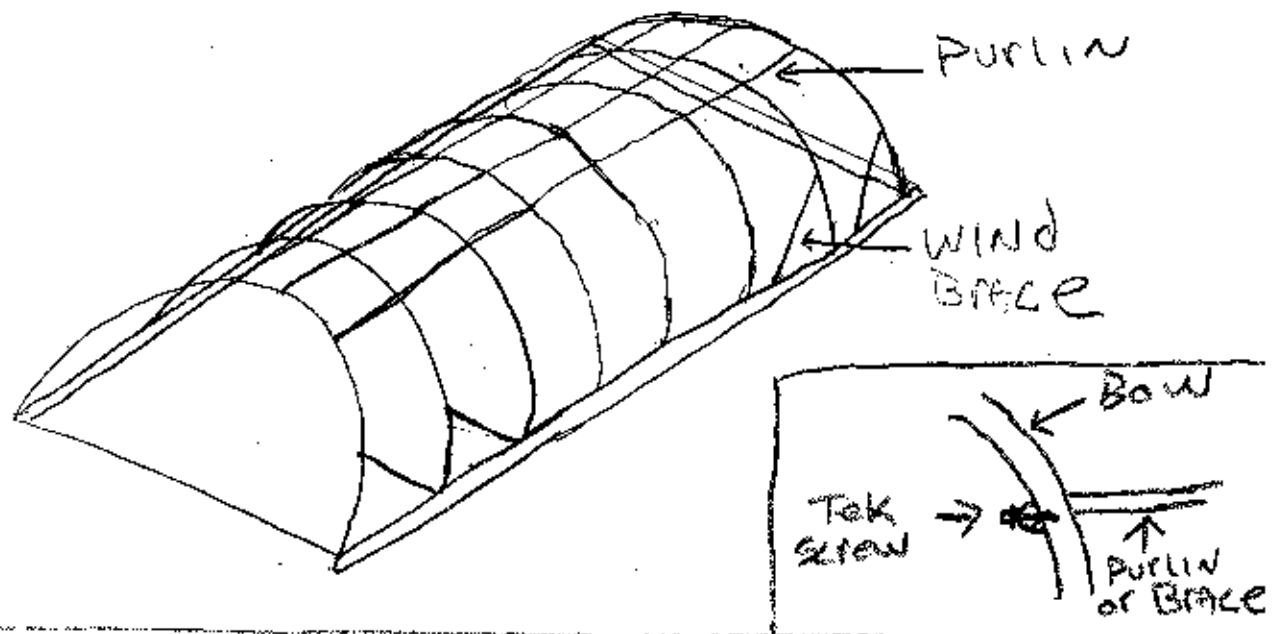
WOOD FRAME BASE

- Use desired length 2x4 Lumber to make frame around STUB LOCATIONS.



- After concrete cures, starting AT ONE END, REMOVE 2 ADJACENT LAG BOLTS FROM STUBS.
- INSERT ENDS OF FIRST bow INTO STUBS MAKING SURE THEY GO IN COMPLETELY.
- DRILL THROUGH EXISTING HOLE IN STUB, THROUGH BOW END.
- RE-INSTALL LAG BOLT SECURING BOW IN PLACE.
- REPEAT THIS PROCESS FOR ALL EXISTING BOWS.

Purlin AND Wind BRACING



- Use $\frac{1}{2}$ inch EMT CONDUIT FOR PURLIN AND WIND BRACING.
- USE AS MANY PURLIN STRIPS AS YOU LIKE. THEY ARE INEXPENSIVE, INCREASE STRENGTH, AND ARE GOOD TO HANG THINGS FROM.
- USE $1\frac{1}{2}$ INCH TEK SCREWS TO SECURE PURLIN TO BOWS.
- FOR WIND BRACING, CUT 10 FT EMT INTO 2 PIECES.
- RUN EACH PIECE FROM BOW TO WOOD FRAME AT APPROX. 45° ANGLE. SECURE END TO BOW WITH $1\frac{1}{8}$ TEK SCREW. SECURE OTHER END TO WOOD FRAME WITH TWO $1\frac{1}{8}$ DECK SCREWS.